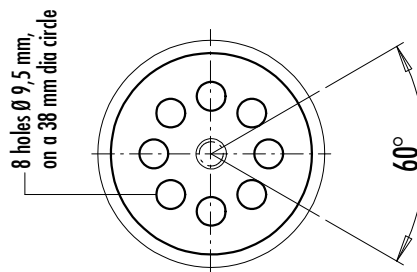
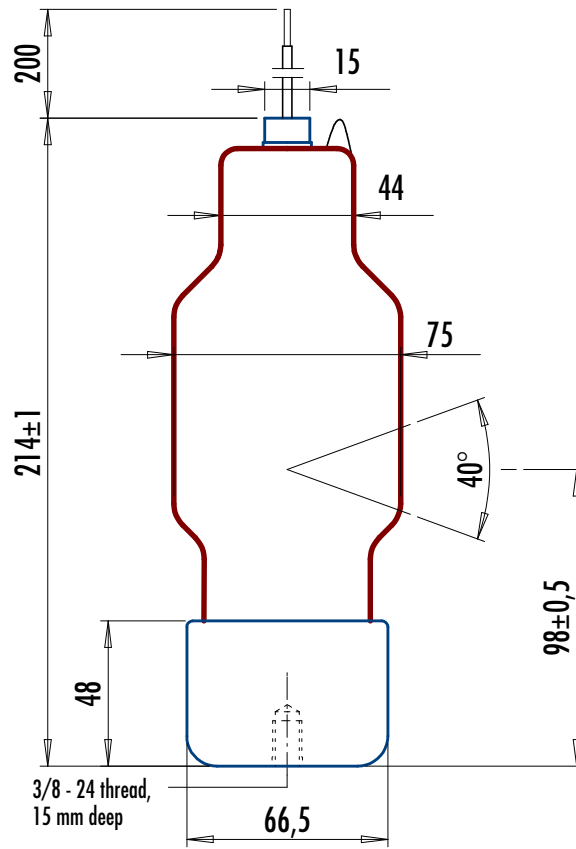


LOHMANN

X-RAY

200/8 EP



0702

**200 KV
X-RAY INSERT 60°
DIRECTIONAL BEAM**

SPECIFICATIONS AND DRAWING ARE SUBJECT TO CHANGE WITHOUT PRIOR NOTICE. TUBE CREATES X-RAY WHEN ENERGIZED. TUBE MAY CONTAIN BERYLLIUM PRODUCT.

tube voltage max.:	200 kV	nom. focal spot:	2,5 x 2,5 mm
tube current max.:	8 mA	inherent filtration:	0,8 Be, 1,5 glass (mm)
(depends on cooling)		anode angle:	25°
tube power max.:	1600 W	beam angle:	60°x 40°
filament voltage ca.:	4 V	frequency:	50-60 Hz
filament current:	4 ± 0,2 A	cooling:	oil, gas

Version
96102

82 A

German Craft and Technology since 1946