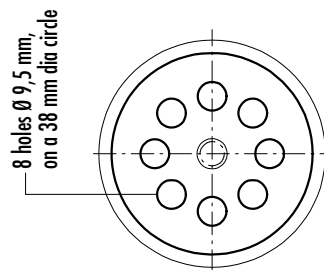
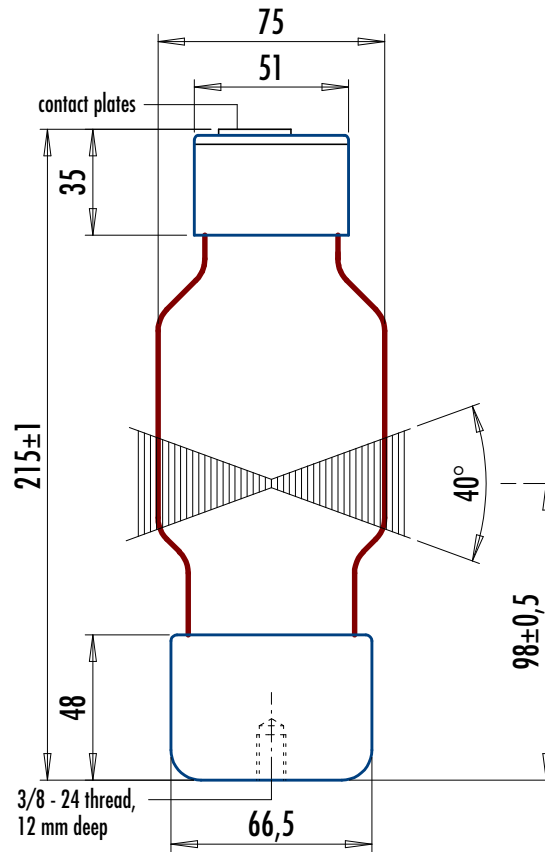


# LOHMANN

## X-RAY

200/5 KREP



0702

**200 KV  
X-RAY INSERT 360°  
ORTHOGONAL BEAM**

tube voltage max.:	200 kV	nom. focal spot:	5 mm $\emptyset$
tube current max.:	5 mA	inherent filtration:	1 mm Al, 1,5 mm glass
(depends on cooling)		anode angle:	$25^\circ$
tube power max.:	1000 W	beam angle:	$360^\circ \times 40^\circ$
filament voltage ca.:	4 V	frequency:	50-60 Hz
filament current:	$4 \pm 0,2$ A	cooling:	oil, gas

Version  
**83019**

76